

# Pictures of the future

A selection of Sketches, Illustrations,  
Diagrams and Visualizations from Except's portfolio.

v2.3 May 2012





Dear reader,

All work on the following pages has been conceptualized, engineered, designed and visualized by Except.

We're excited about the large variety of work our multi disciplinary team has been able to perform over the last decade. We find proof in these results that collaboration between scientists, engineers, designers and developers simply works.

We use illustration and visualization to bring life to our ideas, and we love these images that continue to inspire people around the world. We hope you enjoy this small collection of our imagery.

For more information on these and other projects, visit our website at [www.except.nl](http://www.except.nl), or give us a call.

Tom Bosschaert

*Executive Director, Except Integrated sustainability*

+31 10 7370215

[info@except.nl](mailto:info@except.nl)

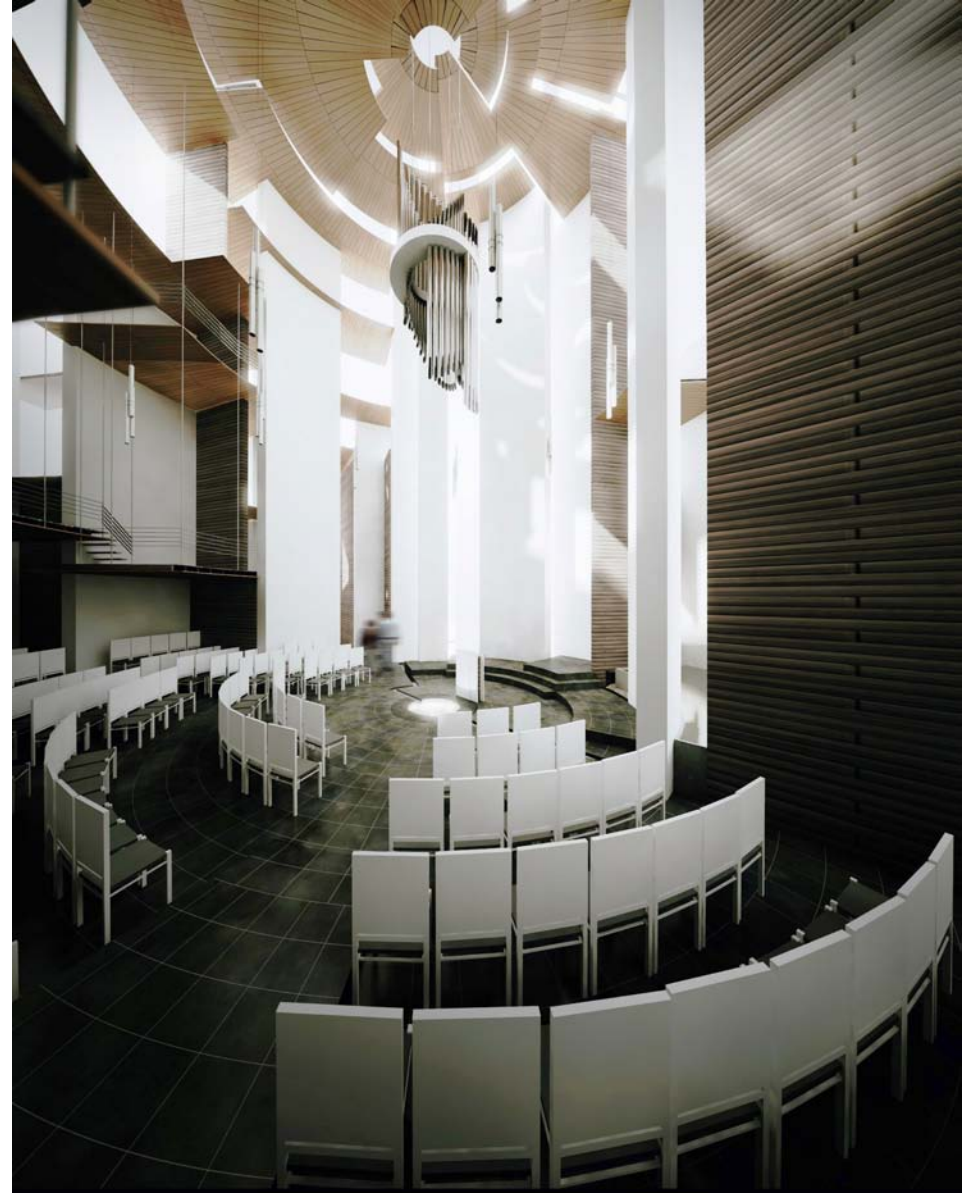
**EXCEPT**  
INTEGRATED SUSTAINABILITY



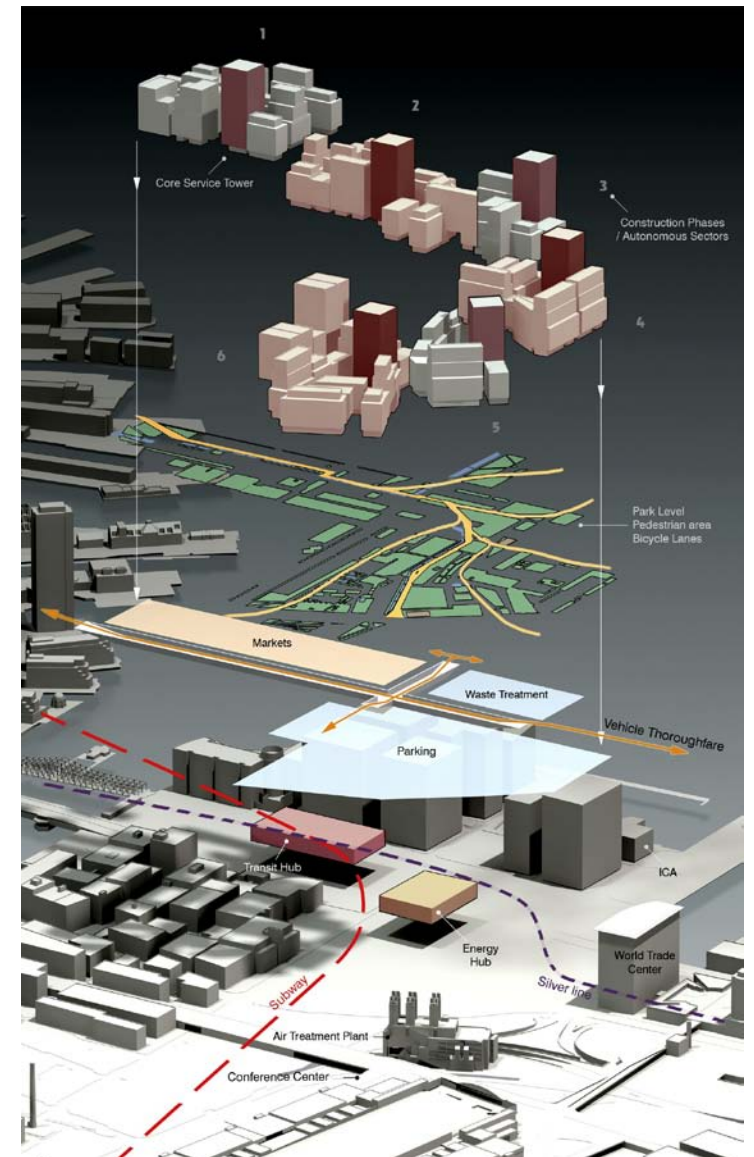




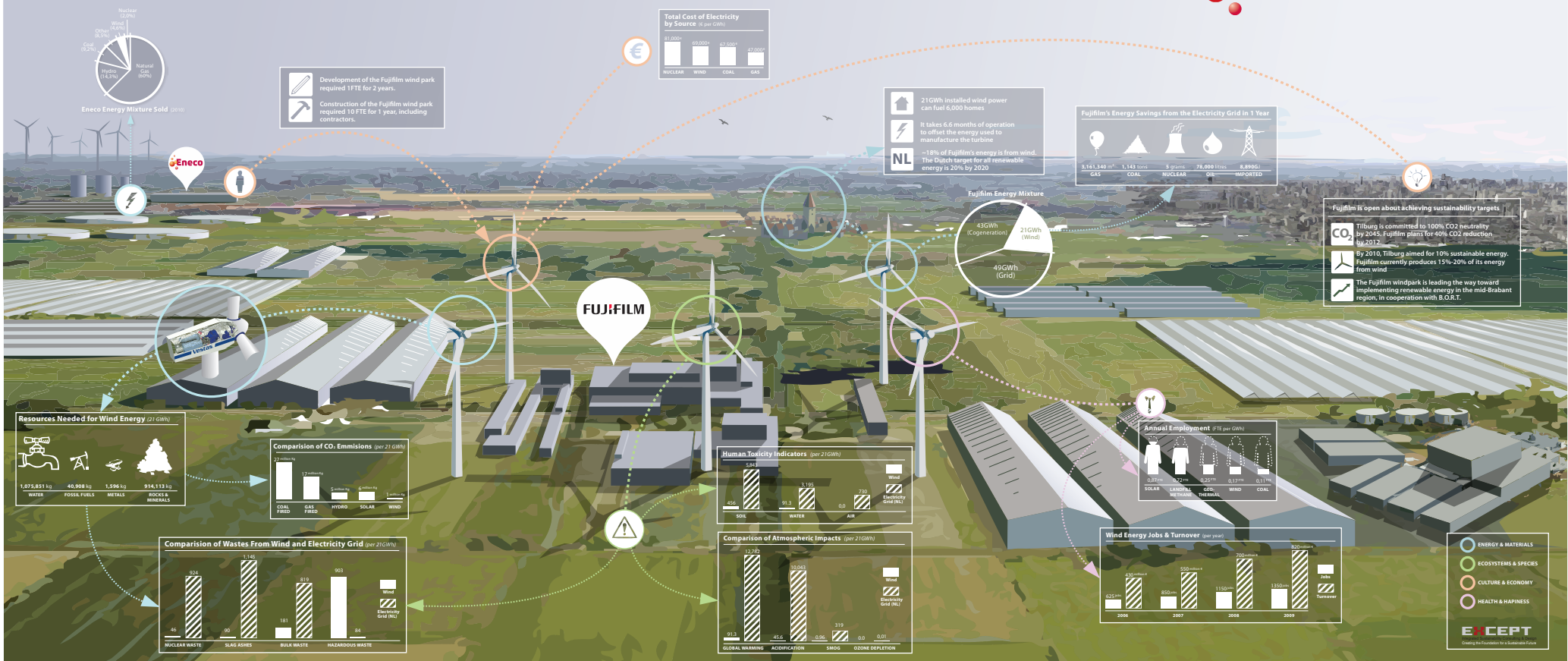








# Fujifilm Wind Park | System Map



client: Eneco  
Sustainability assessment, communication and opening event of Fujifilm Windpark







**EXCEPT**  
INTEGRATED SUSTAINABILITY

client: Except / Innovationnetwork  
Polydome Sustainable Agriculture System

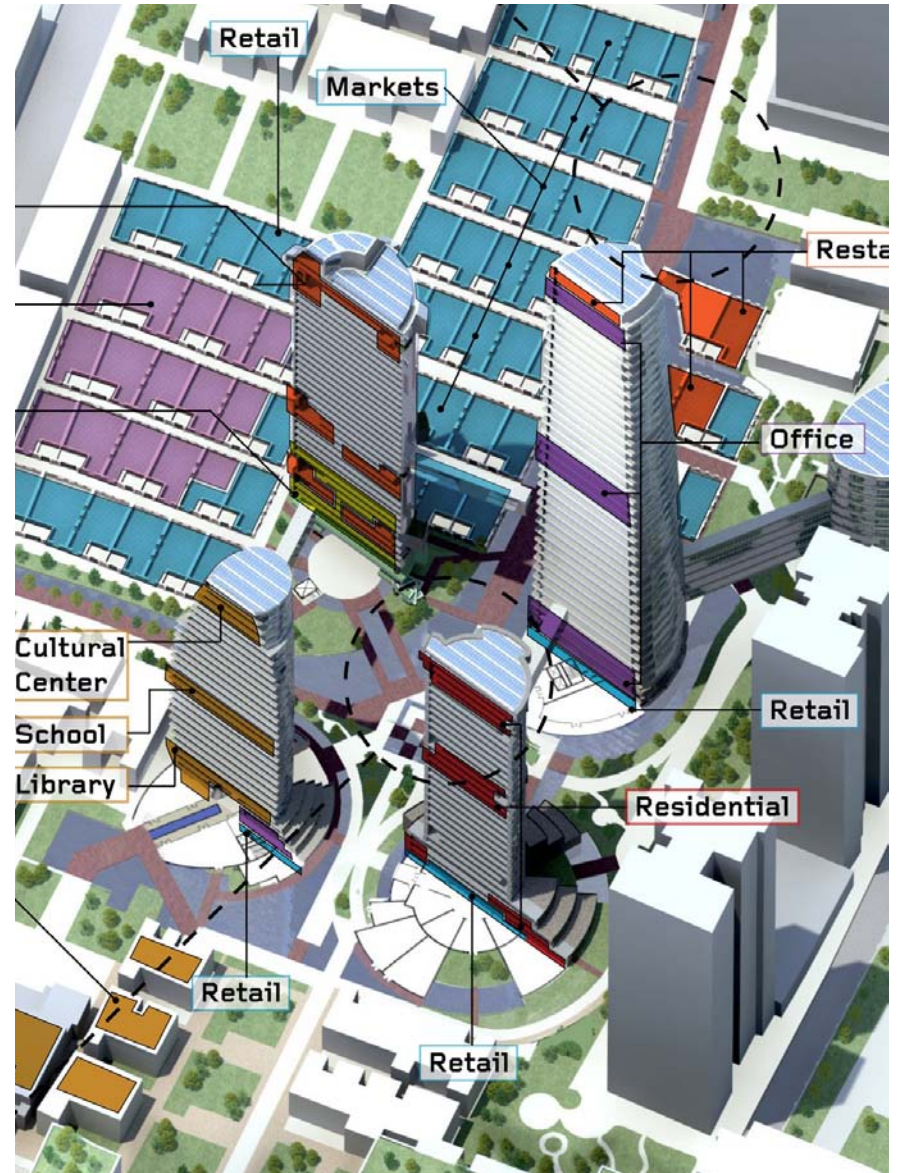




**EXCEPT**  
INTEGRATED SUSTAINABILITY

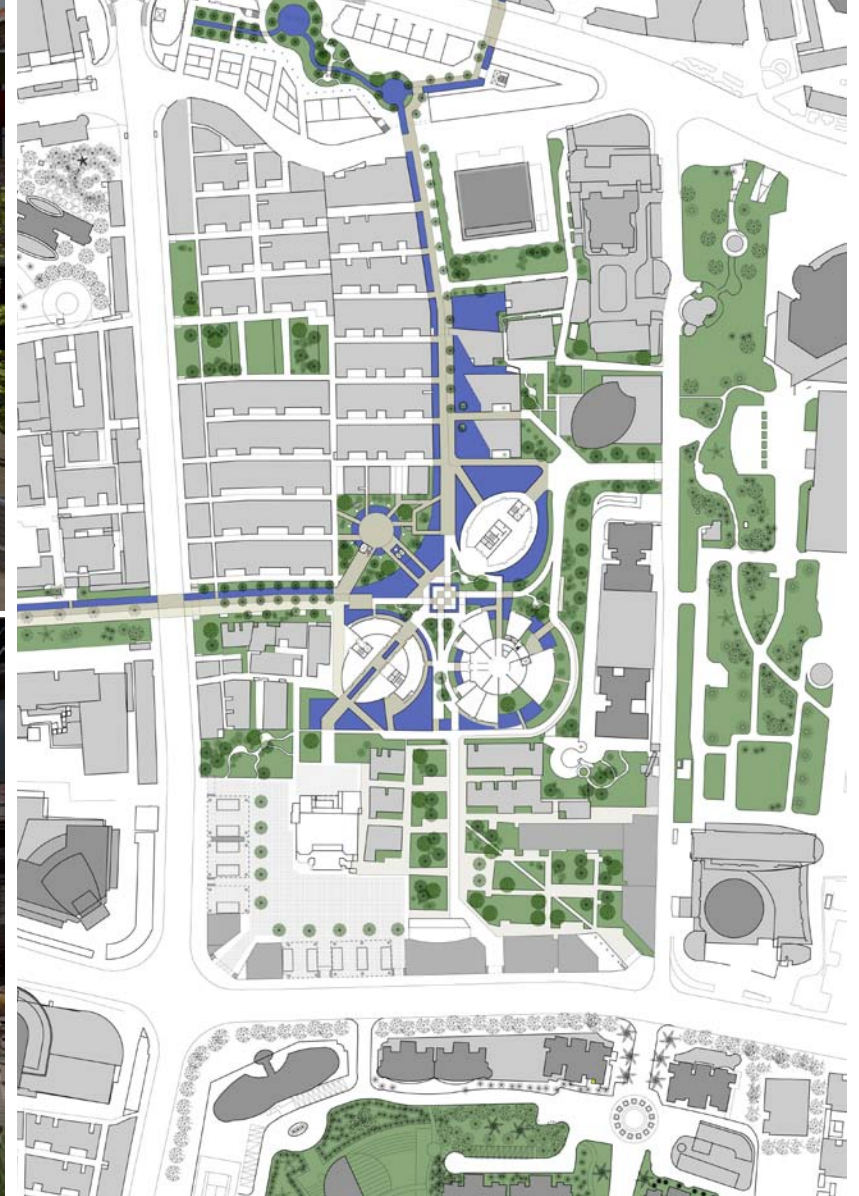
client: Gispen Plants / Innovationnetwork  
Redevelopment of Venlo Greenhouse park





client: City of Shanghai - Urban Masterplan











client:



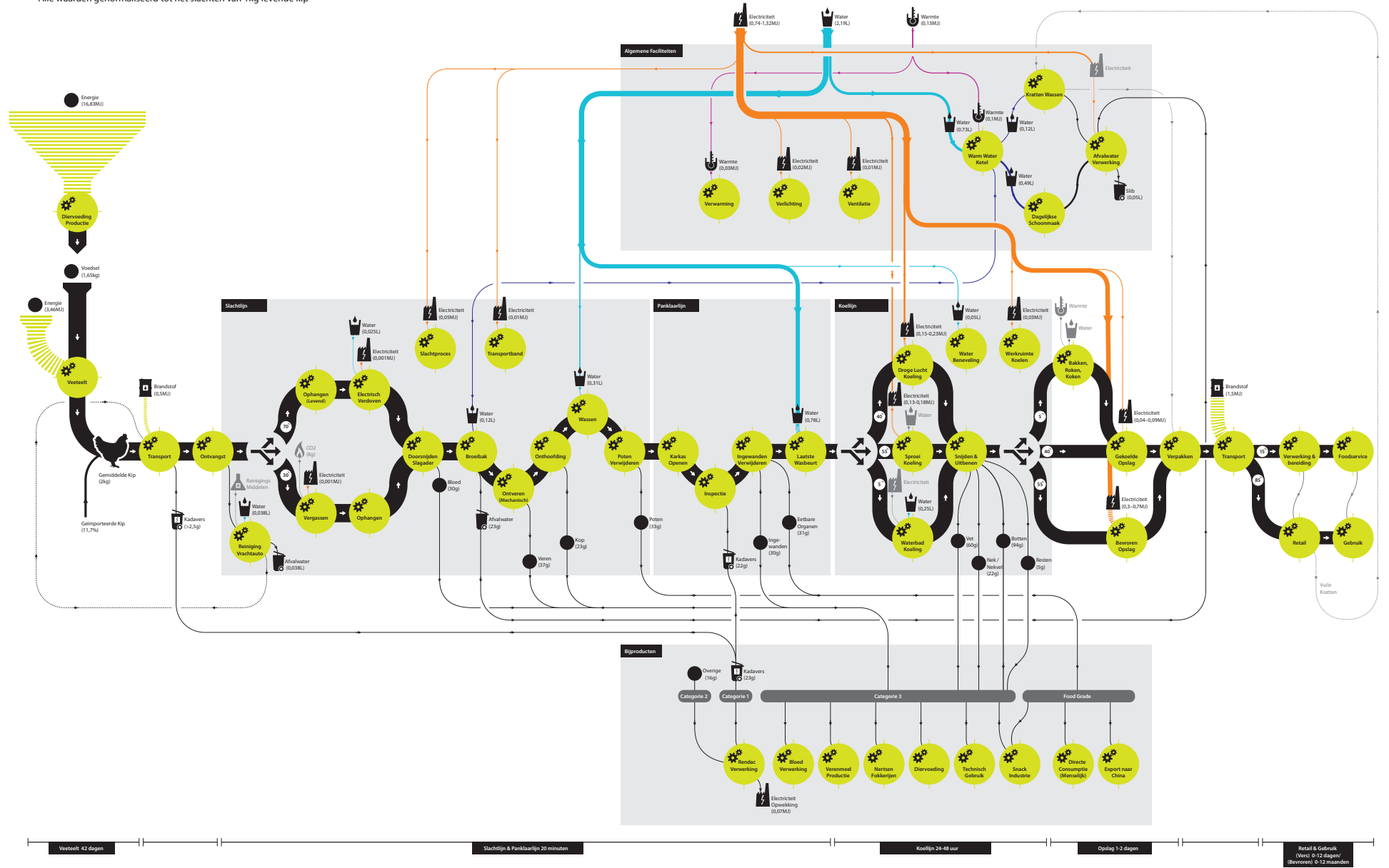
**EXCEPT**  
INTEGRATED SUSTAINABILITY

Sustainable Multi-Purpose school Schiebroek

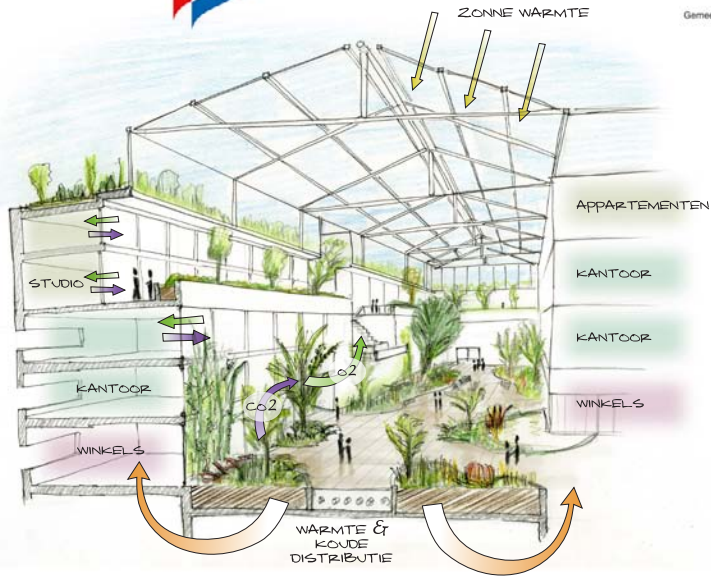


# Keten Kippenvlees

Alle waarden genormaliseerd tot het slachten van 1kg levende kip



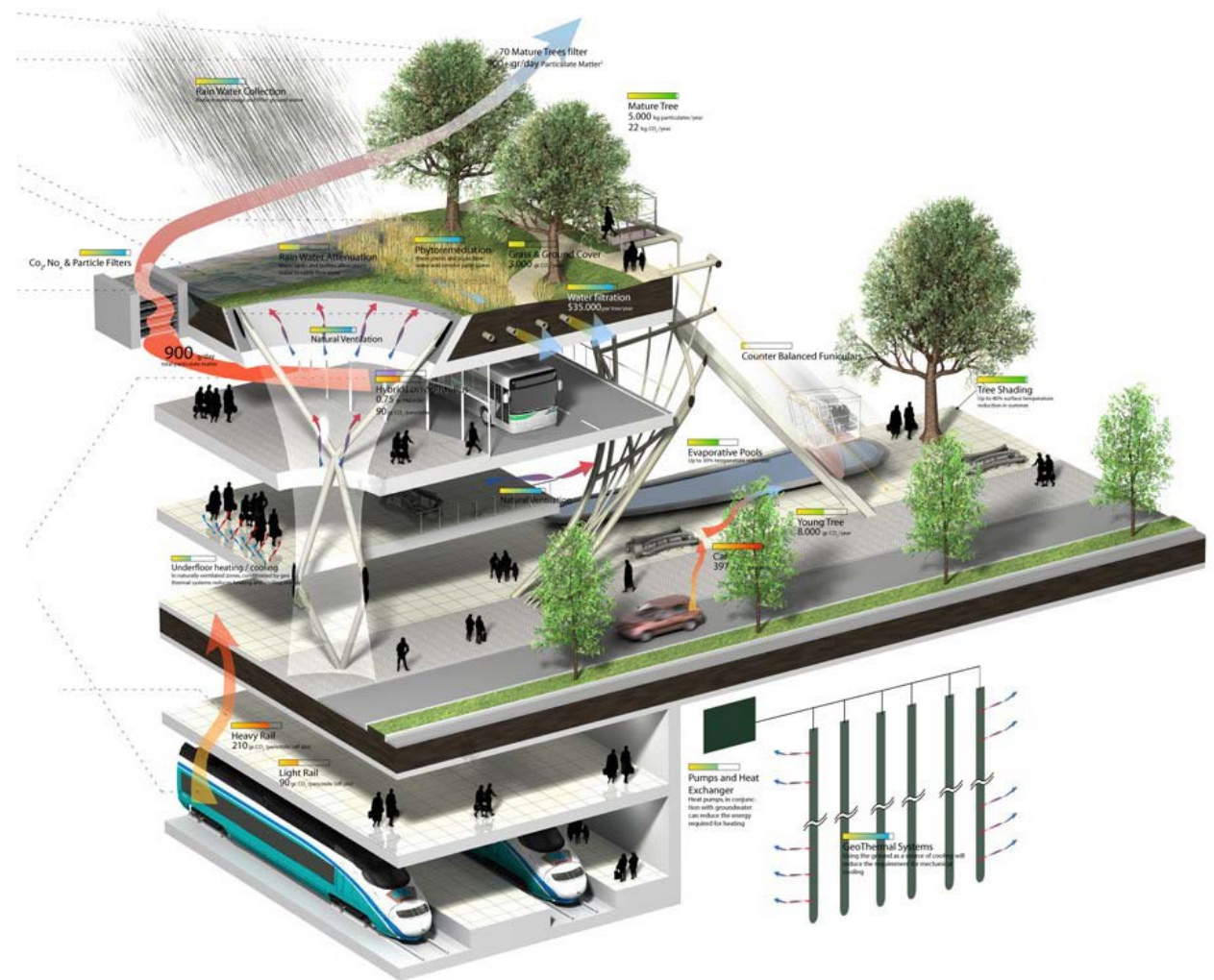






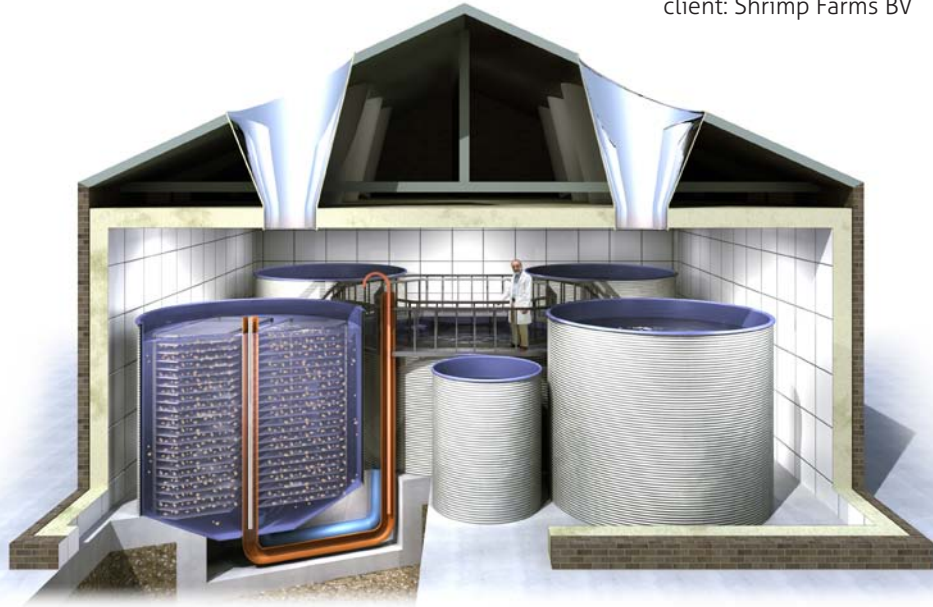
World's largest ecological roof top park, on top of San Francisco's Transport Terminal. Completed in 2015.

client:  
**Pelli Clarke Pelli** Architects

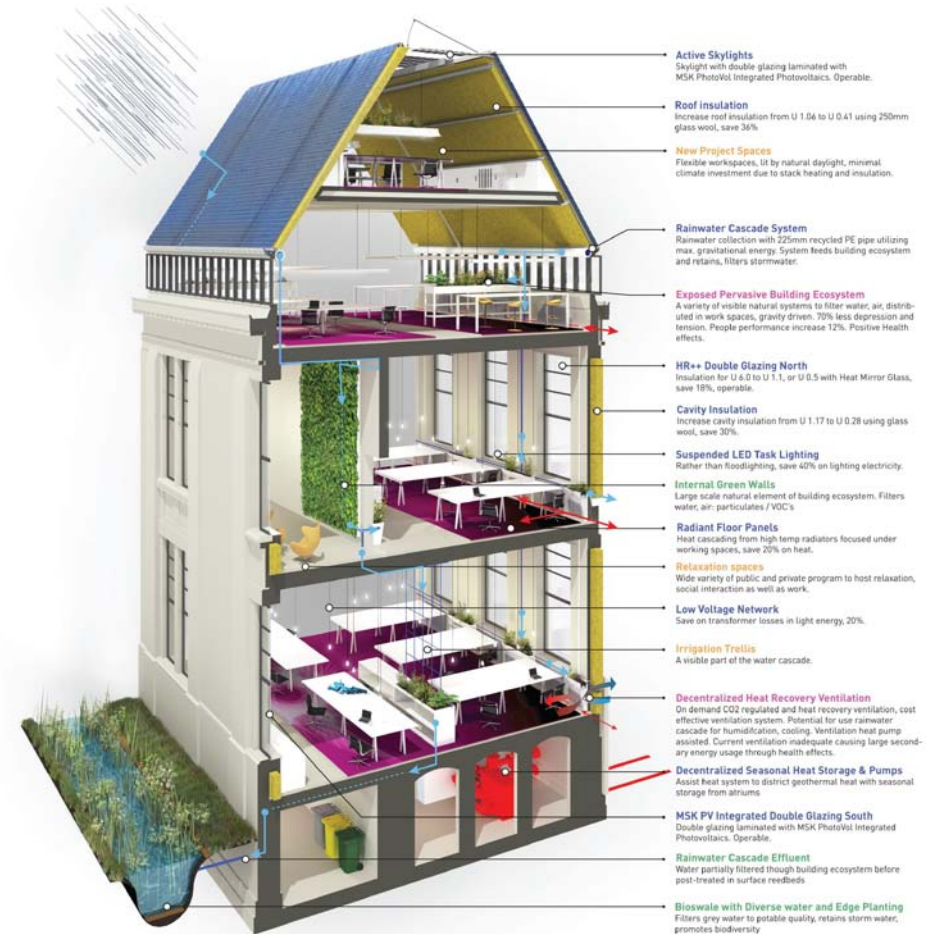




client: Shrimp Farms BV



client:



**EXCEPT**  
INTEGRATED SUSTAINABILITY

Zero energy renovation of architecture faculty

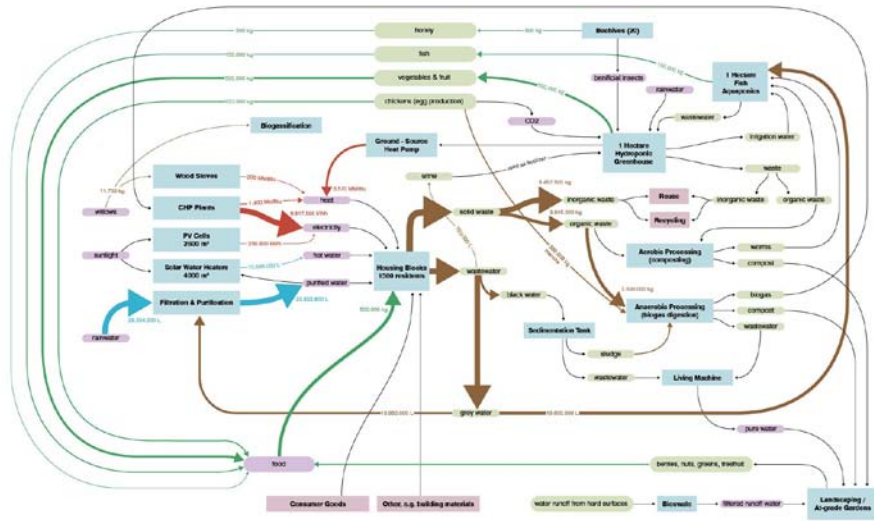


client:

Energie  
Sprong SEV







Redevelopment of social housing neighborhood into energy neutral, water neutral, waste neutral, social programme and 80% food production.

client:



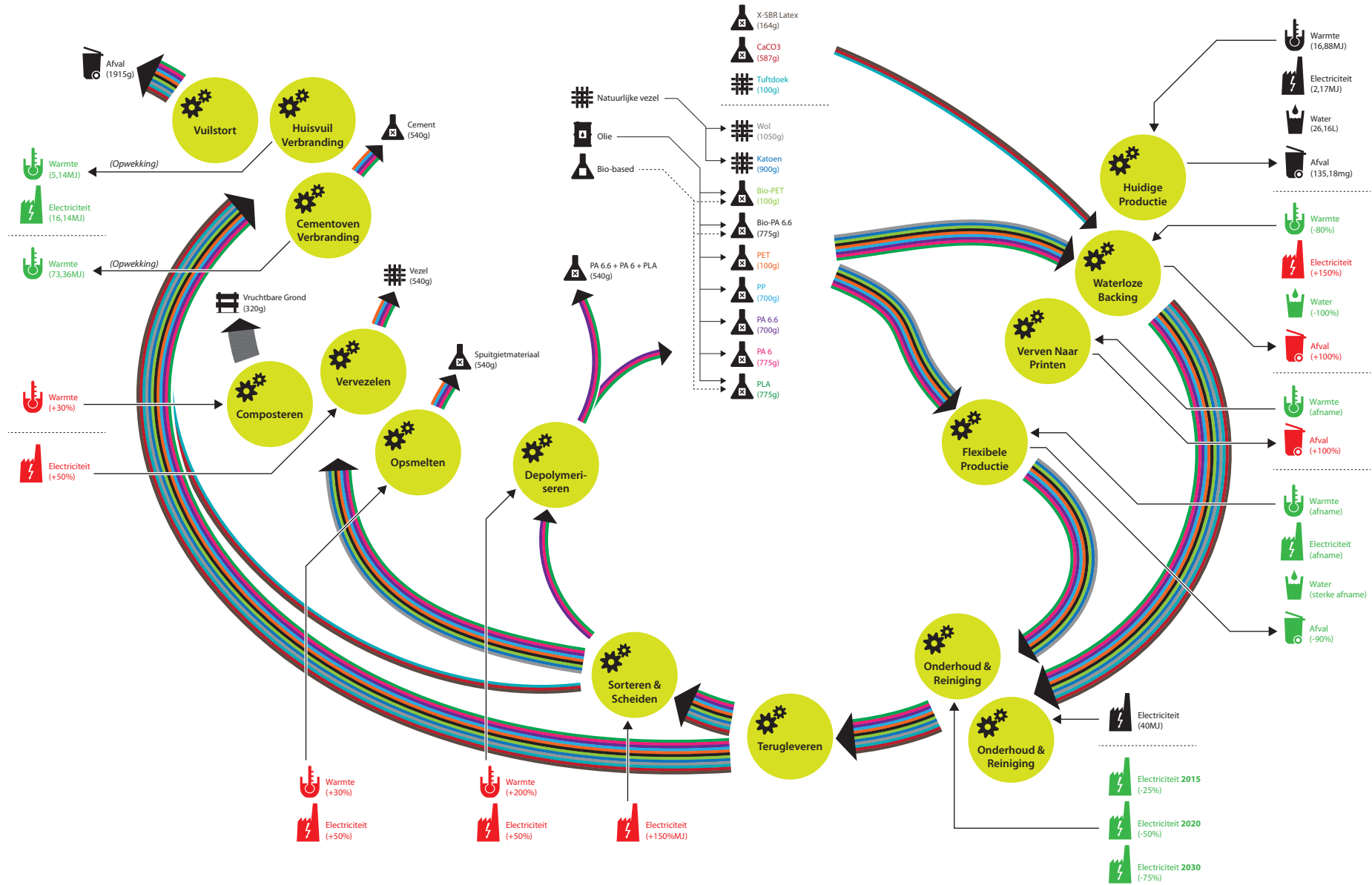


# Systemkaart Tapijt Sector: Visie 2030

Alle waarden op deze kaart zijn genormaliseerd naar 1 m<sup>2</sup> geproduceerd tapijt in Nederland



Agentschap NL  
Ministerie van Infrastructuur en Milieu



Restructuring of the Dutch Carpet Industry



