

Island Renaissance

Enabling resilient and flourishing island communities

Island communities are vulnerable to rapid changes in economy, climate, fuel prices, material supply, and tourism trends. Island Renaissance (IR) is a strategic programme for working with communities to turn crucial dependencies into opportunities to strengthen the local economy and to realize flourishing island societies.



How do we make strong island communities?

Islands appeal to the imagination of people, but they face unique challenges and threats in our changing world. The economy, social communities, and natural environment are so closely interwoven on islands that small changes have a magnified impact on island communities.

Opportunities for islands

How can we use this to our advantage? Small economic, social, and ecological improvements have a much faster and significant impact on islands. When used when performed in concert, these result in beautiful, self-sufficient communities in terms of energy, water and food, where people want to live and work.

Tight social networks allow island communities to rapidly create innovative solutions for sustainable development. These can also function as prime examples for larger systems in more developed economies and communities, and be a source of growth and development for the island.

The Island Renaissance Approach

Island Renaissance offers a range of tools and methodologies aimed at the protection and re-development of islands to transform them into beautiful, flourishing, resilient places, by using its strongest asset; its people. It is a strategic approach that involves all stakeholders in the process from initiation through to living realization.

The IR Team

In order to find these multi-faceted solutions for island communities, a team at Except Integrated Sustainability developed IR. Since 1999 Except has worked to perfect this approach, built a team of worldwide experts and gathered experience in a wide range of fields to stand by organizations that wish to move the frontier of sustainable development.

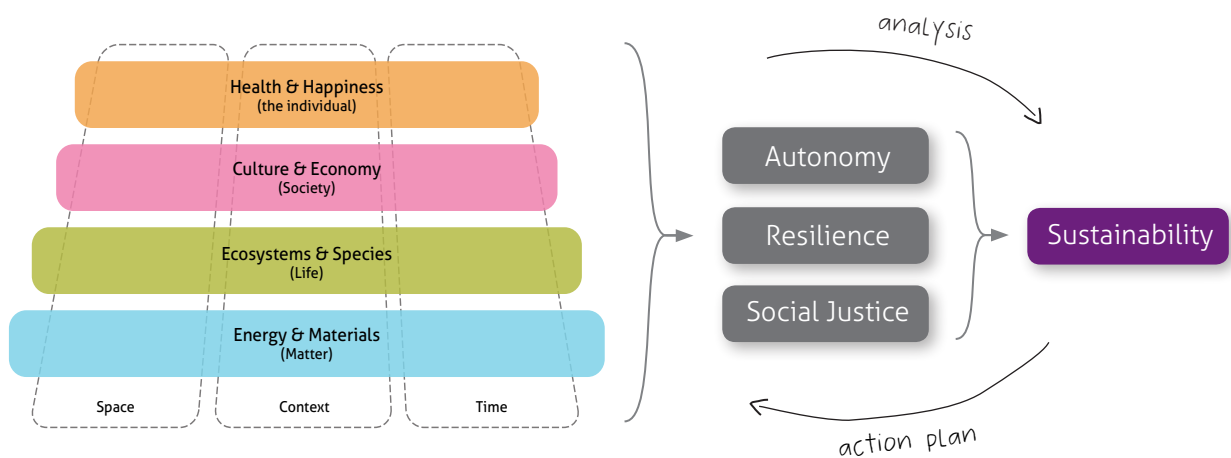
Our team aims to empower the local community to take initiative and take full benefit of the opportunities in a beautiful and healthy environment.



Enabling a fully integrated approach

Island Renaissance has been specifically developed to take the full spectrum of an island's development into account, ranging from resource aspects through ecological, cultural, economical aspects as well as the health and opportunities for individuals and businesses in the community.

This integrated approach enables a full understanding of the complex social and environmental reality of islands, and offers solutions that serve the people of the community first and foremost, for the long term.



What are the outcomes?

Building strong economies and lowering dependencies go hand in hand. New technologies that focus on localized economic cycles, ecosystem services and smart urban innovations are very attractive and beneficial for Islands. They increase living quality on the island and create new opportunities for tourism.

In our decade of work, we've found solutions that affect several areas at once, for instance, using energy generating technologies that support the local community, builds biodiversity and functions as a tourist attraction.

Island Renaissance catalyzes the transition to sustainable growth and development of your community, and create primes example of sustainable island development.

Concrete results may include:

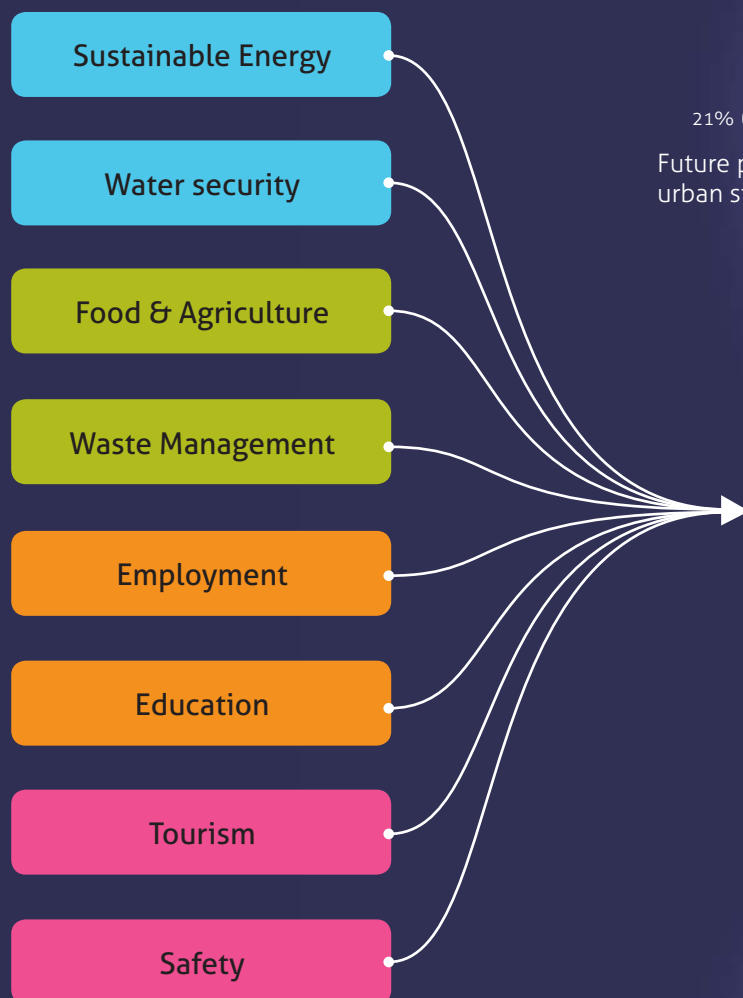
- » Increased permanent jobs for local residents
- » Increased opportunities for local businesses
- » Increased community involvement
- » Self reliance in energy, water, food and waste management
- » Flourishing of local ecosystems

Island Renaissance Toolkit

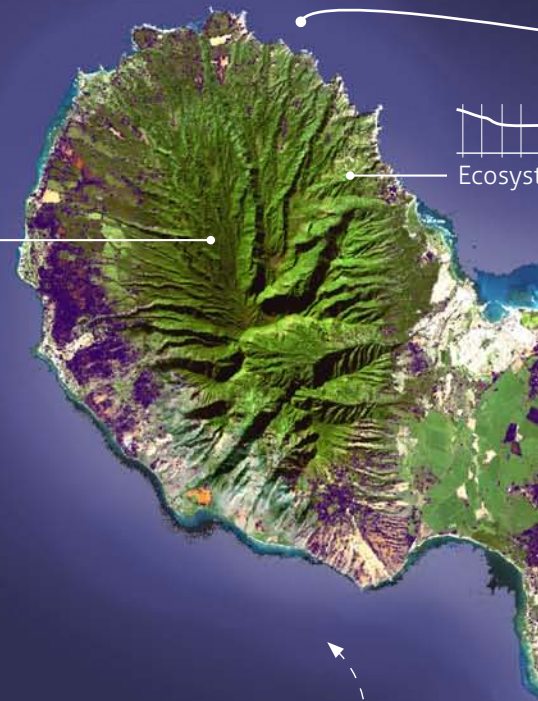
IR offers a range of tools and methodologies aimed at the protection and redevelopment of islands to transform them into the beautiful, flourishing, resilient places, by using its strongest asset; its people. It is a strategic approach that involves all stakeholders in the process from initiation through to living realization.

IR has been specifically developed to take the full spectrum of an island's development into account, ranging from resource aspects through ecological, cultural, economical aspects as well as the health and opportunities for individuals and businesses in the community.

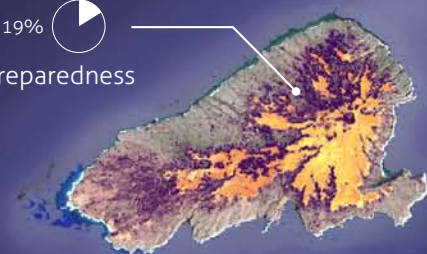
IR FOCUS AREAS (AMONG OTHERS):



21%
Future proof
urban structure



Sea level rise
19%
Preparedness

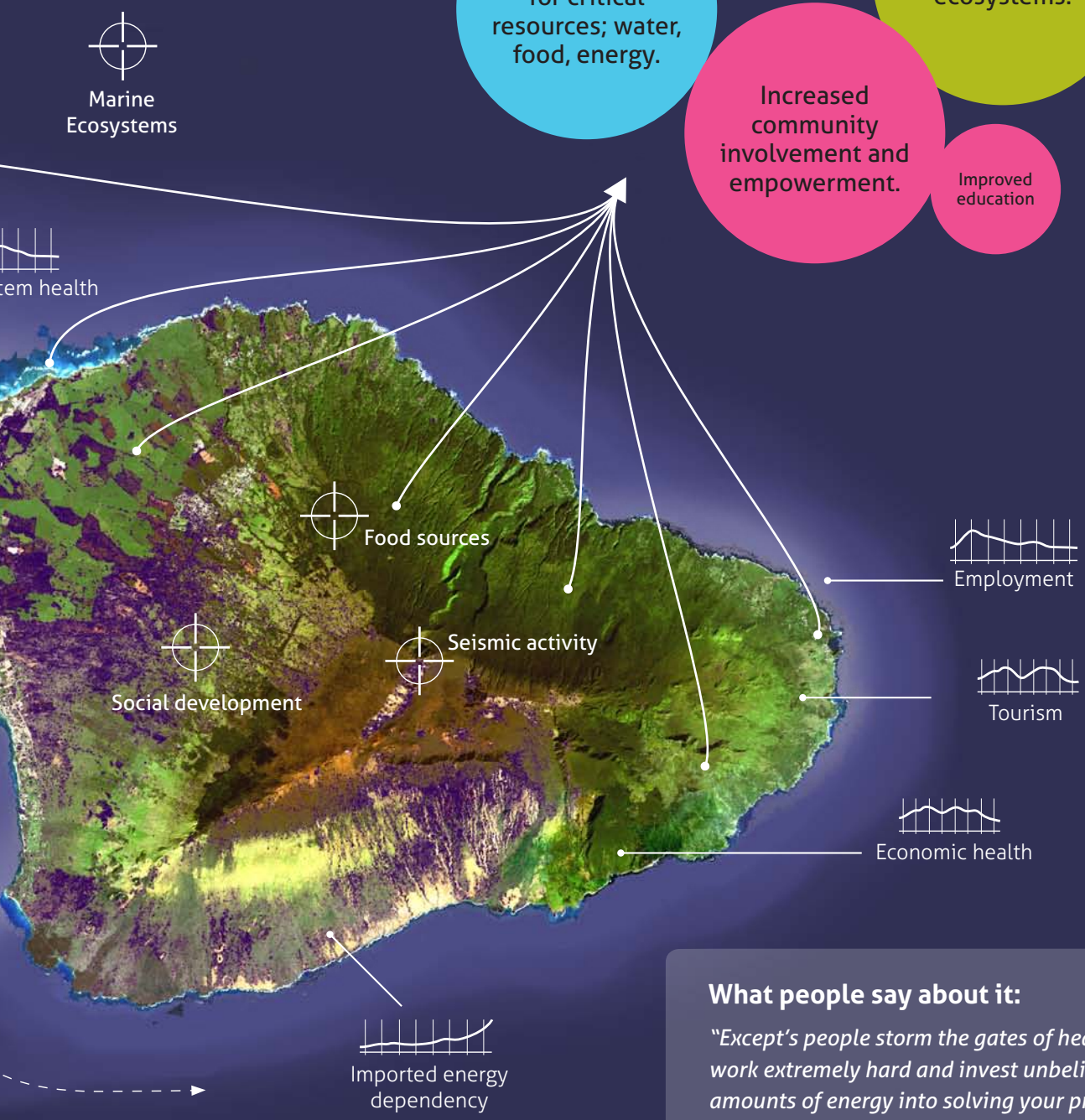


IMPROVEMENT TECHNIQUES:

Natural Capital

Social Justice

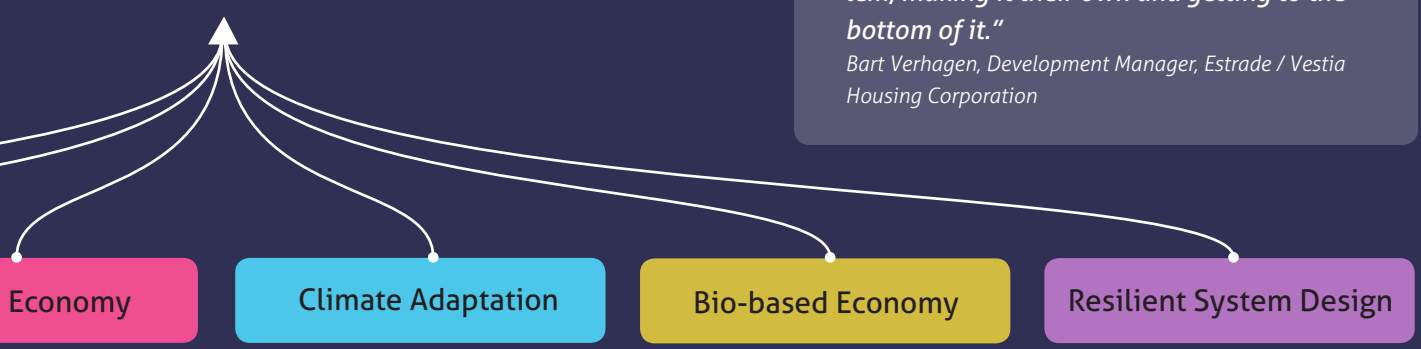
Circular



What people say about it:

"Except's people storm the gates of heaven, work extremely hard and invest unbelievable amounts of energy into solving your problem, making it their own and getting to the bottom of it."

Bart Verhagen, Development Manager, Estrade / Vestia Housing Corporation



Island Renaissance steps & core services

Where do we start?

Island Renaissance is structured in a way that the community can start small, and grow into a longer term development gradually. The following main steps are available. Custom trajectory development is also available on request.

1 Inspiration

This is the first step towards creating a shared vision of a sustainable island. We collect the ideas and opinions that exist within the island community. We join these with opportunities and solutions that are in use worldwide.

The result is an inspiring booklet for the future of the island, outlining easy, short term projects that will help to gain community support and funding.

- › The inspiration book gives quick and easy insight into possibilities to local stakeholders and the community.

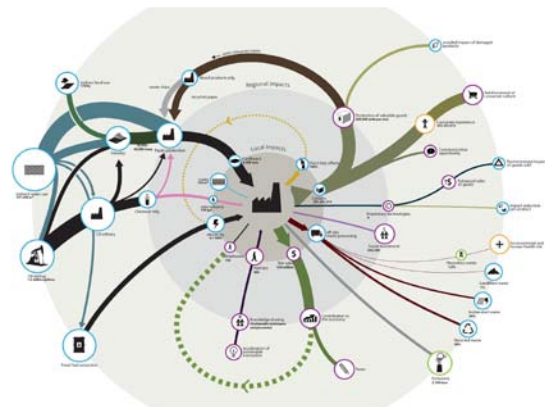


2 Sustainable Island Scan (SIS)

The Sustainable Island Scan (SIS) is a thorough investigation into the current state of the island's entire system, covering energy, materials, ecosystems, species, culture, economy, health and happiness.

Key areas for improvement and barriers to sustainability will be identified and visualized in the Quick Scan Benchmark Dashboard.

- › The Island Scan is a full-spectrum scan that shows immediate opportunities for improvement, based on Except's SiD system.



3 Island Vision

Together with the stakeholders and local community we collaborate towards an in-depth understanding of the system. We use the insight gained from the Island Scan analysis to guide the creation of an overall vision for the island.

The Vision Book illustrates the vision, and enables support and motivation of the local and international community to join the creation of this sustainable future.

- › Vision development can result in vision designs and concepts, which can then be visualized and developed.



4

Road Map

To go from vision to reality, we analyze and evaluate different solution directions (scenarios). Guidelines, principles, strategies, business plans, infrastructure and policies are developed that will guide the journey towards a flourishing, abundant, and self-sufficient island.

This road map becomes the foundation on which individuals, businesses and government can build and develop their own initiatives to realize the shared vision.

› Using Systems-Mapping we find the best steps towards the vision

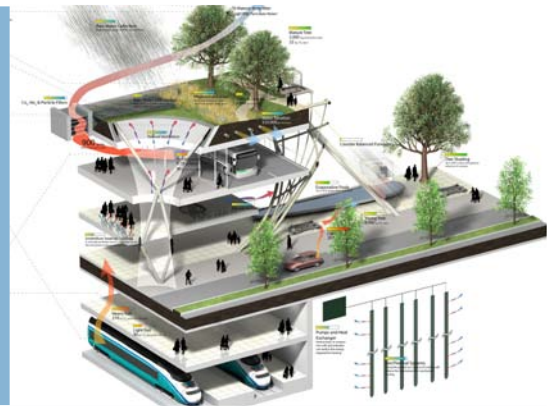


5

Solution Development

IR's multi-disciplinary experts and partners work with the local community to develop key project plans and guide the implementation. We assist and guide the process of implementation partner selection and take into account funding solutions for your island to ensure the implementation of feasible and successful projects that empower and develop the local community.

› *Solution Development results in fully integrated action steps and designs that make a significant difference on the island.*



6

Implementation Support

Implementation support includes process management, quality and goals assurance, and we take great care in developing community initiatives involving a wide range of stakeholders in the process.

Training and coaching modules are available to guide and develop the implementation skills of key decision makers in the process.

› *Except Integrated Sustainability's team at work.*



Contact

Have questions, or want to find out how to start Island Renaissance for your island? Contact IR developer Aki Ackerman at aki@except.nl. Or call us directly: +31 10 7370215. We'll be happy to talk to you.

Find other projects at: www.except.nl. Except Integrated Sustainability offers over a decade of experience in self-sustaining design and development, on four continents.



Aki Ackerman
Island Renaissance
Program Manager

"Island Renaissance is what you get when you combine partners in innovative design, engineering, planning, strategy and environmental research. With a broad team we realize these future proof islands in all parts of the world."

Island Renaissance Partner Network

To achieve success in complex matters like island redevelopment trajectories the cooperation of various disciplines is key without losing in-depth knowledge of the disciplines separately. We have set up a highly skilled and divers team that have proven to be able to connect these two.

Some of our clients:



Kingdom of the Netherlands



Singapore
Government



Pelli Clarke Pelli Architects

What they say about us:

"Because Except understands both content and communication, they are an ideal partner. Ideas are quickly processed and critically reviewed, the process is fast, and delivers quality."

Ben Roemgens,
Project manager road maps, DNV

"Working with Except was inspiring and effective. They quickly delivered beyond our expectations. We look forward to future projects."

Justin Elicker,
Yale University Office of Sustainability

"Except is a couple of years ahead of other organizations... they are one of the pioneers in this area."

Paul van de Sande,
Sustainability Program Manager, City
Government of Roosendaal

EXCEPT
INTEGRATED SUSTAINABILITY

w: www.except.nl
e: info@except.nl
t: +31 (0) 10 7370215

Stadhuisplein 15
3012 AR Rotterdam
the Netherlands